

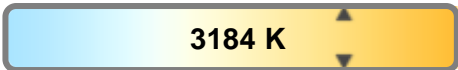
Light efficiency:



Light quality:



Color temperature:



Output: 1090 lm
Peak: 23934 cd
Power: 33.7 W
PF: 0.94



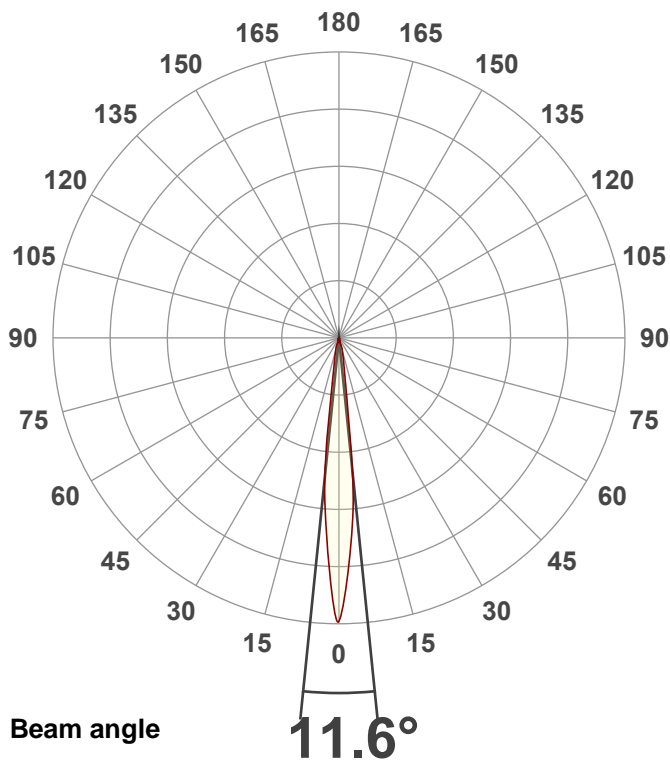
Tracking number: [n/a](#)

Product name:
ElectraPix Par 7

Item number:
3200K

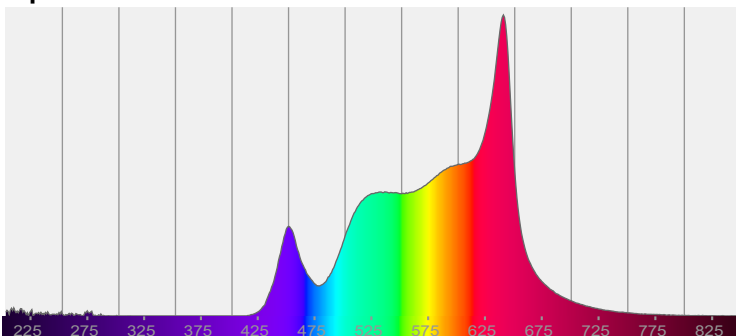
Date and time:
9/6/2024 3:54:33 PM

Description:
@ 23

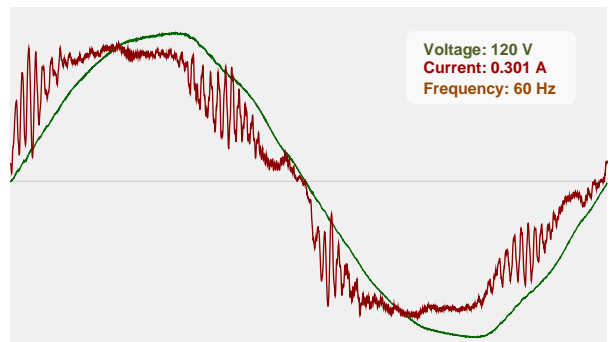


CIE 1931
x: 0.431
y: 0.414

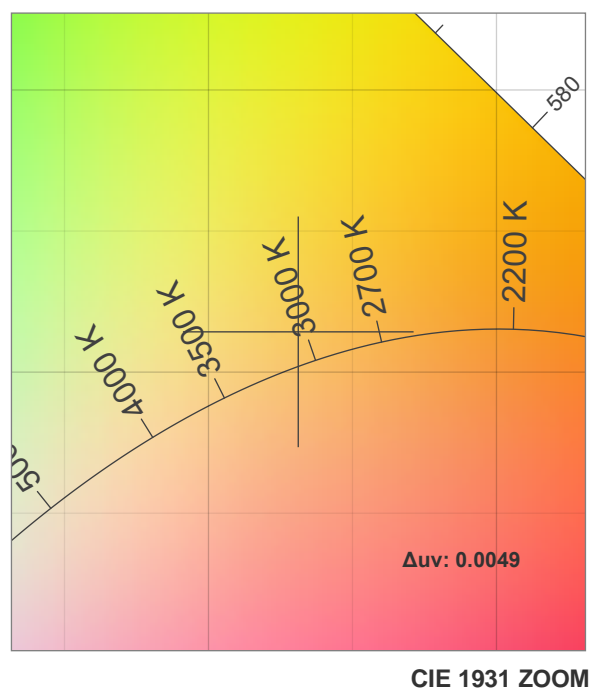
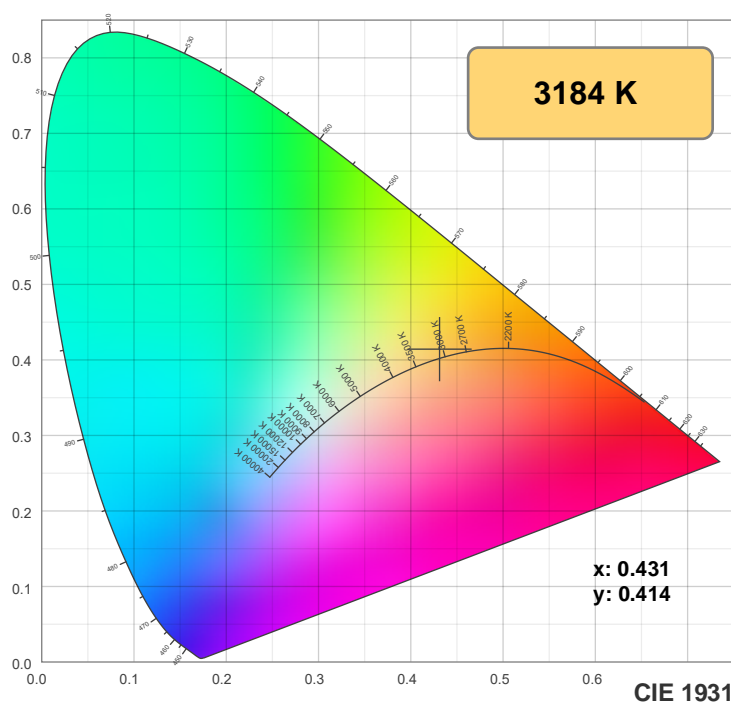
Spectra



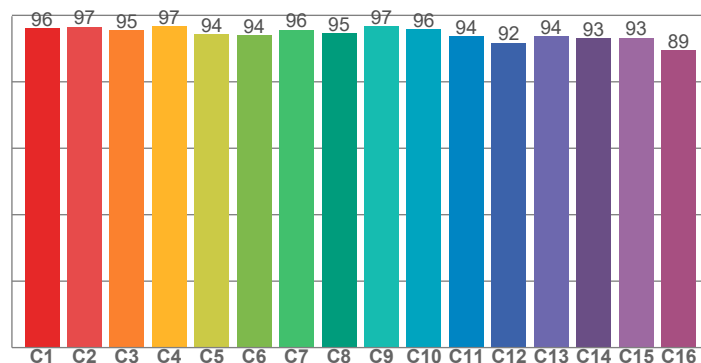
Power



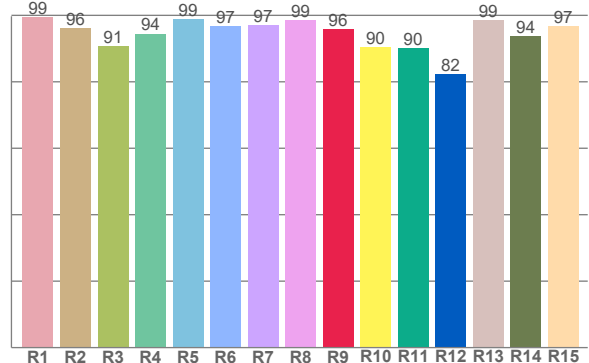
Color details



TM-30: 94.7



CRI: 96.5 (R1-R8)



CRI R values, only R1-R8 are used to calculate final CRI value

R1	R2	R3	R4	R5	R6	R7	R8	R9	R10	R11	R12	R13	R14	R15
99.4	96.1	90.7	94.5	98.7	96.7	97.1	98.5	95.9	90.4	90.2	82.2	98.6	93.8	96.8

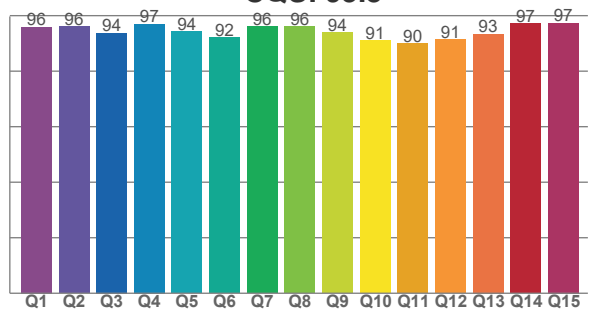
TM30 C values, 16 binned values out of total of 99 C values

C1	C2	C3	C4	C5	C6	C7	C8	C9	C10	C11	C12	C13	C14	C15	C16
96.1	96.6	95.4	96.7	94.2	94.0	95.6	94.6	96.7	95.8	93.6	91.7	93.7	93.1	93.3	89.4

CQS Q values

Q1	Q2	Q3	Q4	Q5	Q6	Q7	Q8	Q9	Q10	Q11	Q12	Q13	Q14	Q15
95.8	96.1	93.7	97.1	94.3	92.2	96.1	96.2	93.9	91.1	89.9	91.3	93.4	97.1	97.4

CQS: 93.8



Color parameters

Color temperature	Color rendering index	Red component	Color fidelity	Color gamut	Color quality scale	Color coordinate cie 1931	Color coordinate cie 1931	Color coordinate	Color coordinate	Color deviation from black body
CCT	CRI	CRI R9	TM30 Rf	TM30 Rg	CQS	x	y	u	v	Δuv
3184 K	96.5	95.9	94.7	101.6	93.8	0.431	0.414	0.243	0.350	0.0049

TM-30 details

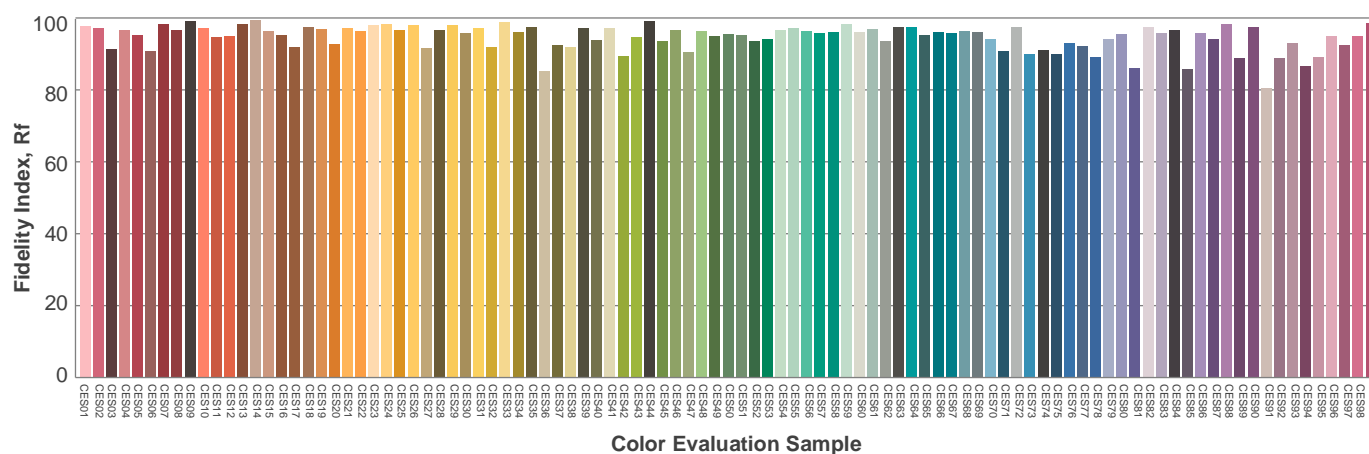
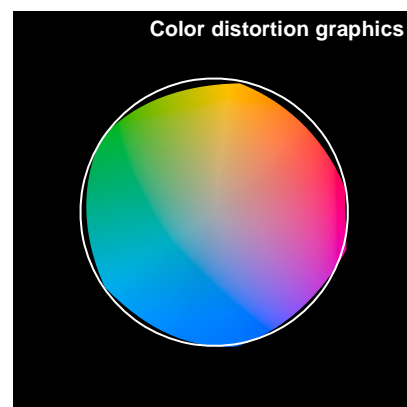
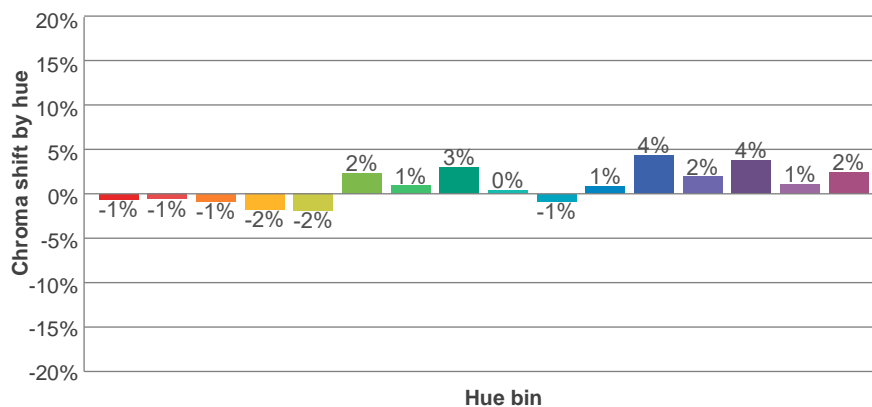
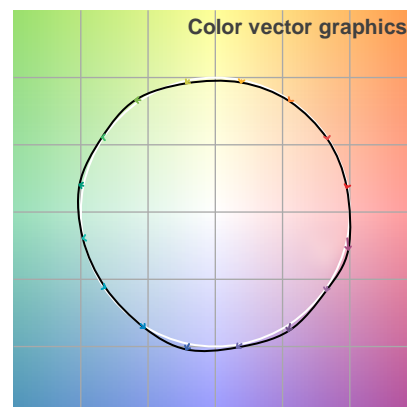
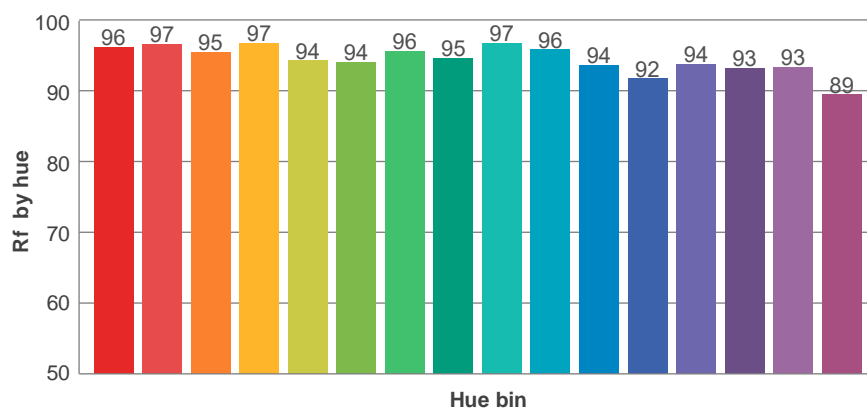
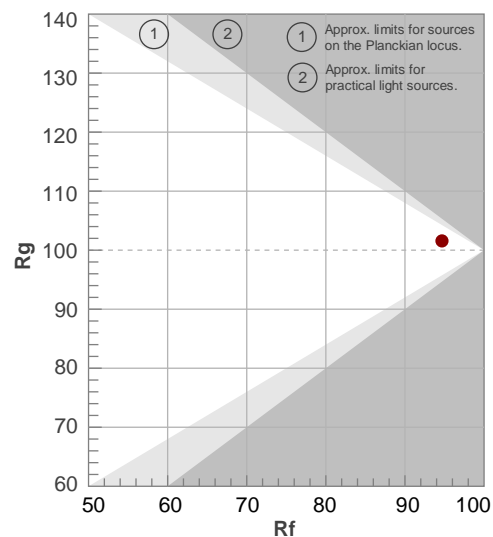
Rf 94.7

Fidelity index Rf

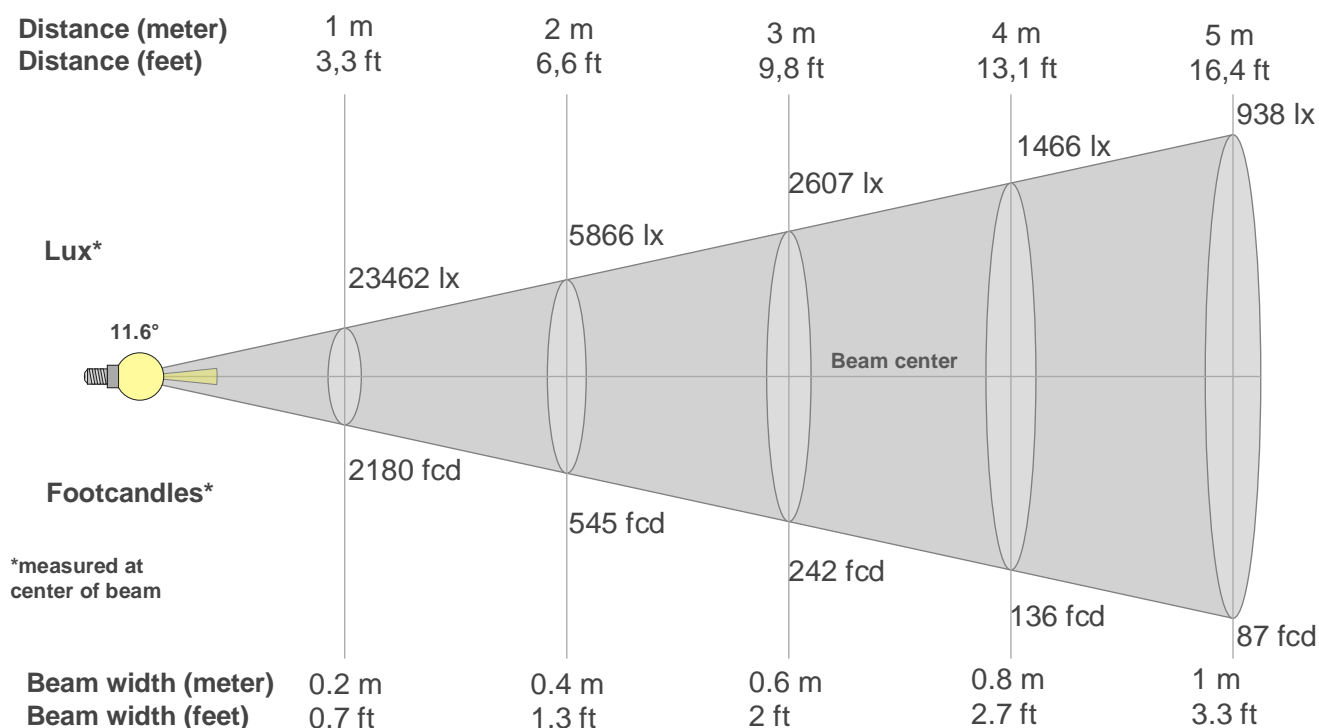
Rg 101.6

Gamut index Rg

Hue Bin	R _f	Shifts (%)	
		Chroma	Hue
1	96	-1%	-1%
2	97	-1%	-1%
3	95	-1%	0%
4	97	-2%	0%
5	94	-2%	3%
6	94	2%	3%
7	96	1%	1%
8	95	3%	0%
9	97	0%	0%
10	96	-1%	1%
11	94	1%	4%
12	92	4%	-1%
13	94	2%	-4%
14	93	4%	-4%
15	93	1%	-3%
16	89	2%	-8%



Beam details



Beam intensities from 1-20m

1m	2m	3m	4m	5m	6m	7m	8m	9m	10m	11m	12m	13m	14m	15m	16m	17m	18m	19m	20m
3.3ft	6.6ft	9.8ft	13.1ft	16.4ft	19.7ft	23ft	26.2ft	29.5ft	32.8ft	36.1ft	39.4ft	42.7ft	45.9ft	49.2ft	52.5ft	55.8ft	59.1ft	62.3ft	65.6ft
23462lx	5866lx	2607lx	1466lx	938lx	652lx	479lx	367lx	290lx	235lx	194lx	163lx	139lx	120lx	104lx	92lx	81lx	72lx	65lx	59lx
2179.7fcd	544.9fcd	242.2fcd	136.2fcd	87.2fcd	60.5fcd	44.5fcd	34.1fcd	26.9fcd	21.8fcd	18fcd	15.1fcd	12.9fcd	11.1fcd	9.7fcd	8.5fcd	7.5fcd	6.7fcd	6fcd	5.4fcd

Intensities in 0° c-plane

0°	1°	2°	3°	4°	5°	6°	7°	8°	9°	10°	11°	12°	13°	14°	15°	16°	17°	18°	19°
23.5K	21.6K	19.6K	17.7K	15.8K	13.8K	11.5K	9.1K	6.7K	4.4K	2.5K	2.0K	1.6K	1.1K	0.7K	0.3K	0.2K	0.2K	0.2K	0.1K
100%	92%	84%	76%	67%	59%	49%	39%	29%	19%	11%	9%	7%	5%	3%	1%	1%	1%	1%	1%

Intensities in 90° c-plane

0°	1°	2°	3°	4°	5°	6°	7°	8°	9°	10°	11°	12°	13°	14°	15°	16°	17°	18°	19°
23.5K	21.6K	19.6K	17.7K	15.8K	13.8K	11.5K	9.1K	6.7K	4.4K	2.5K	2.0K	1.6K	1.1K	0.7K	0.3K	0.2K	0.2K	0.2K	0.1K
100%	92%	84%	76%	67%	59%	49%	39%	29%	19%	11%	9%	7%	5%	3%	1%	1%	1%	1%	1%

Intensities in 180° c-plane

0°	1°	2°	3°	4°	5°	6°	7°	8°	9°	10°	11°	12°	13°	14°	15°	16°	17°	18°	19°
23.5K	22.3K	20.1K	18.0K	15.8K	13.7K	11.5K	9.3K	7.1K	5.0K	2.8K	2.0K	1.6K	1.2K	0.8K	0.4K	0.3K	0.2K	0.2K	0.2K
100%	95%	86%	77%	67%	58%	49%	40%	30%	21%	12%	8%	7%	5%	3%	2%	1%	1%	1%	1%

Intensities in 270° c-plane

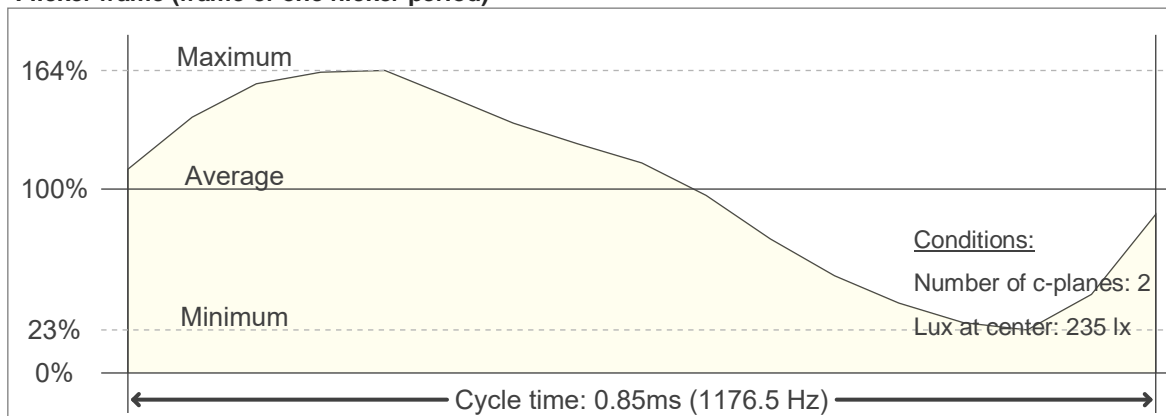
0°	1°	2°	3°	4°	5°	6°	7°	8°	9°	10°	11°	12°	13°	14°	15°	16°	17°	18°	19°
23.5K	22.3K	20.1K	18.0K	15.8K	13.7K	11.5K	9.3K	7.1K	5.0K	2.8K	2.0K	1.6K	1.2K	0.8K	0.4K	0.3K	0.2K	0.2K	0.2K
100%	95%	86%	77%	67%	58%	49%	40%	30%	21%	12%	8%	7%	5%	3%	2%	1%	1%	1%	1%

Beam angle 50%	Field angle 10%	Cutoff angle 2,5%	Intensity ratio in 120° cone	Intensity ratio in 90° cone
11.6°	20.4°	28.6°	100.0%	99.8%

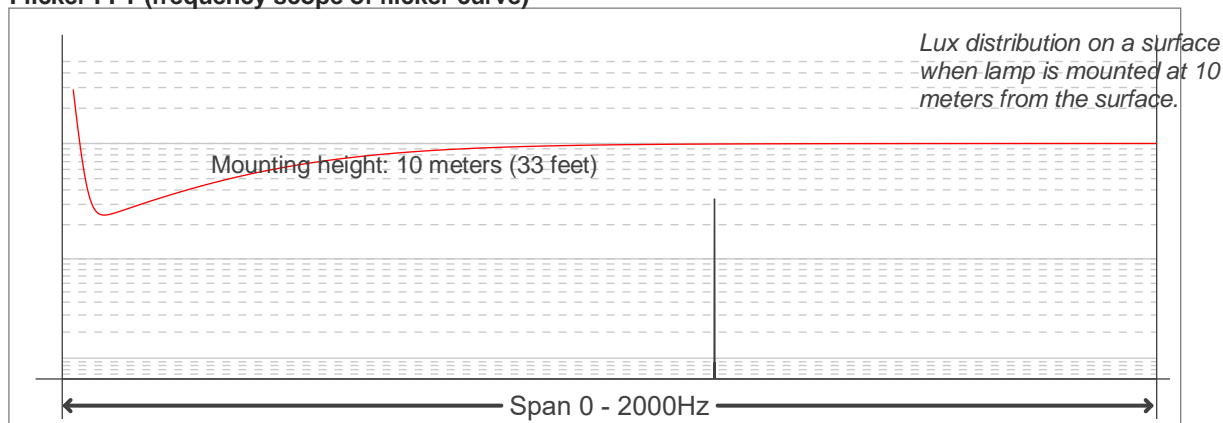
Flicker

Flicker curve (complete sampled flicker signal)

Flicker frame (frame of one flicker period)



Flicker FFT (frequency scope of flicker curve)



Flicker results:

Flicker frequency:		1176.47 Hz	
Flicker index:	0.21	JA8/10 40Hz	0.45 %
Flicker percentage:	92.2 %	JA8/10 90Hz	1.02 %
SVM: (Visual flicker)	0.68	JA8/10 200Hz	2.28 %
PstLM	0.04	JA8/10 400Hz	4.33 %
Mp	0.08	JA8/10 1000Hz	11.3 %

Flicker conditions:

Sample rate:	20000 samples/second
--------------	----------------------